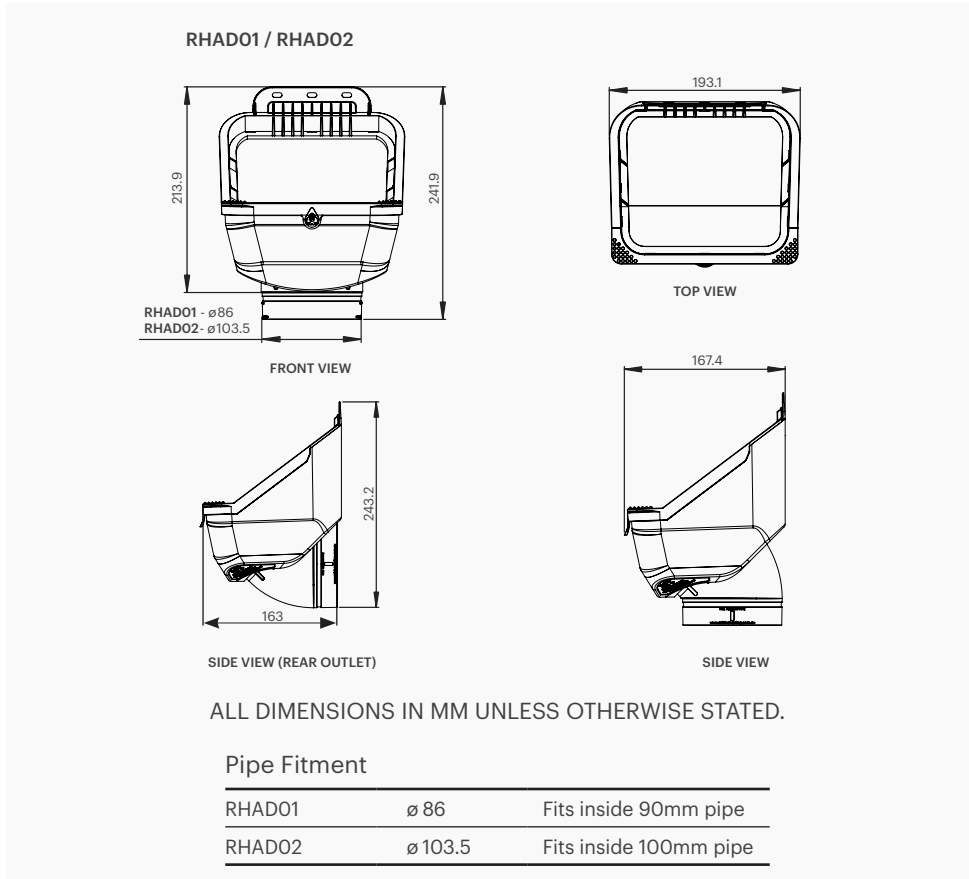


PRODUCT DIMENSIONS



DISCLAIMER This product specification is not a complete guide to product usage. Product specifications may change without notice. For more information visit rainharvesting.com.au. Keep this manual handy for future reference. © Rain Harvesting Pty Ltd.

COMPLIANCE

- AS/NZS 3500.3:2003 Plumbing and Drainage – Stormwater Drainage
- enHealth Council
 - Guidance on the Use of Rainwater Tanks
 - Preventing Mosquitoes Breeding
- HB230:2008 Rainwater Tank Design and Installation Handbook
- Queensland Health Regulations 1996 (Part 8 – Mosquito Prevention)

RAIN HARVESTING

by Blue Mountain Co

+61 (0)7 3248 9600

rainharvesting.com.au

RAIN HARVESTING

by Blue Mountain Co

Leaf Eater Advanced



Installation and Specification Guide

PRODUCT DETAILS

A compact mosquito-proof rain head for small spaces, awkward places and horizontal and vertical downpipes.

RHAD01 90mm

RHAD02 100mm

FEATURES AND BENEFITS

- Patented single screen technology for advanced debris shedding (Clean Shield™)
- Pivot the outlet to suit vertical or horizontal (rear outlet) downpipes – variety of installation options in one product
- Filter leaves and debris before they enter your downpipes no matter what shape your gutters, eaves and roof may be.
- Single screen with 0.955mm aperture mosquito proof stainless steel mesh

Installation

WHAT'S IN THE BOX?

- Leaf Eater Advanced

TOOLS/MATERIALS YOU MAY REQUIRE

- Tape measure
- Marker pen
- Saw
- Screws
- Screwdriver or drill
- Solvent cement glue

NOTE 1: Ensure a suitable gap 20mm-50mm is placed between the open end of your downpipe and screen of your rain head, to allow debris to escape the flow of water. This can vary depending on the type/size of leaf matter and debris you experience in your gutter.

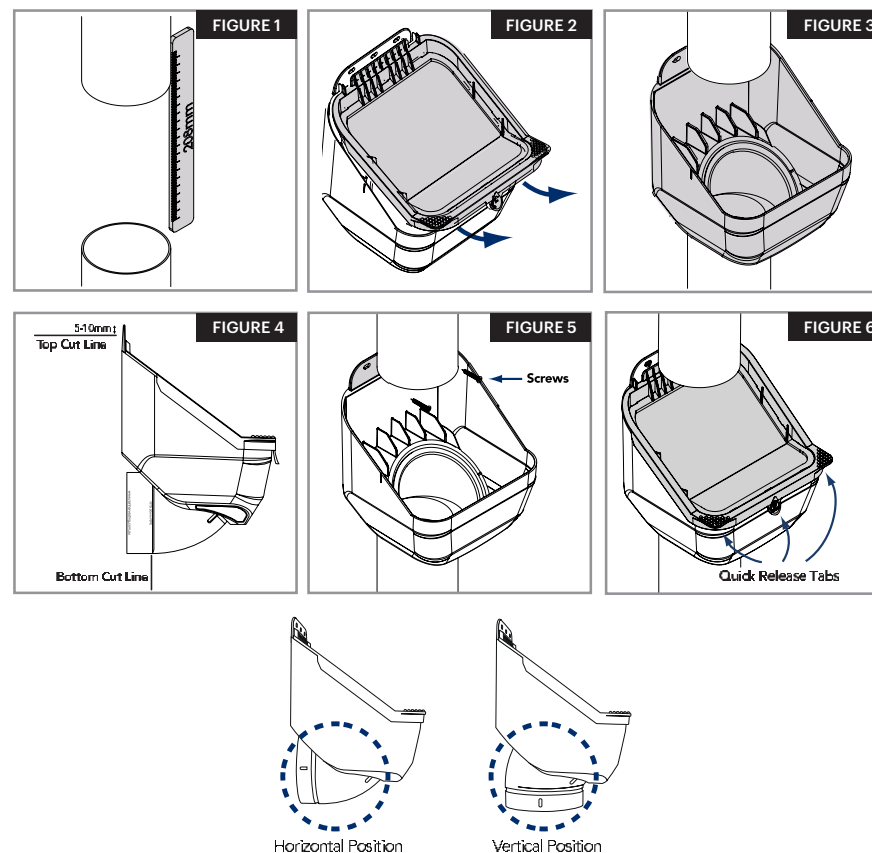
GUTTER, EAVE & "MID" MOUNT (VERTICAL)

1. Locate the position at which you will be installing your Leaf Eater Advanced rain head. Whether this is directly under your gutter/eave or midway down your downpipe, it should be a minimum of 500mm above your tank inlet and tank overflow pipe.
2. For installation on a vertical downpipe directly under your gutter, measure 208mm from the bottom of the existing gutter pop and remove this section of downpipe. For installation under your eaves or midway down your downpipe, remove a 208mm section of pipe at your desired installation point. Ensure all cut edges are clean and smooth (FIGURE 1).
3. Remove the Clean Shield™ screen by lifting it up and then out (FIGURE 2).
4. Insert your Leaf Eater Advanced rain head by sliding it up behind the top section of downpipe and then down into position. The rain head outlet pipe should be slid firmly into the bottom downpipe until it can be pushed no further (FIGURE 3).
5. Using the screw slots provided, screw your Leaf Eater Advanced into position. Ensure appropriate screws (and anchors if required) are used (FIGURE 5).
6. Reinsert the Clean Shield™ screen into your rain head. Ensure the screen sits firmly in place and check installation is secure (FIGURE 6).
7. If desired, you can paint your rain head to match your downpipes and/or building.

GUTTER MOUNT (HORIZONTAL)

1. Locate the position at which you will be installing your Leaf Eater Advanced rain head. Whether this is directly under your gutter/eave or midway down your downpipe, it should be a minimum of 500mm above your tank inlet and tank overflow pipe.
2. Remove the Clean Shield™ screen by lifting it up and then out (FIGURE 2).
3. Swivel the outlet to the horizontal position. Some force may be required.

4. Position your Leaf Eater Advanced next to your existing pipework and use it as a template to mark top and bottom cutting lines. Cut the pipe where you have marked. Ensure all cut edges are clean and smooth (FIGURE 4).
5. Use solvent cement to glue the rear outlet into the horizontal pipe. The back fixing plate should sit behind the top section of downpipe.
6. Screw your Leaf Eater Advanced into position using the screw slots provided. Use appropriate screws (and anchors if required) (FIGURE 5).
7. Reinsert the Clean Shield™ screen into your rain head. Ensure the screen sits firmly in place and check installation is secure (FIGURE 6).
8. If desired, you can paint your rain head to match your downpipes and/or building.



MAINTENANCE

Your rain head's Clean Shield™ screen is mostly self-cleaning. If cleaning is required, simply take hold of the quick release tabs and pull the Clean Shield™ screen upwards and outwards, then hose or brush off before reinserting the screen.